

HOW TO TURN YOUR SHED INTO A MAN CAVE



www.readersheds.co.uk - shedoftheyear

A free guide from


WALTONS
EST. 1878

CONTENTS

SUMMARY 4

PLANNING 5

- 1) Uses and Requirements 5
 - Furniture, storage, and accessories 5
 - Utilities 6
 - Design 7
 - Base 7
 - Position 7
 - Ventilation..... 8
 - Aspect 8
- 2) Plan Layout and Size 9
- 3) Assess the State of Your Shed 10
- 4) Make a Job List 10

CONVERTING 12

- 5) Damp-proofing..... 12
- 6) Insulation 12
- 7) Electricity 14
- 8) Lighting..... 16
- 9) Heating 16
- 10) Internet..... 18
- 11) Water..... 18
- 12) Security..... 19
- 13) Storage 19
- 14) Decoration 20
- 15) Entertainment 21
 - Resources 22
 - New sheds 22

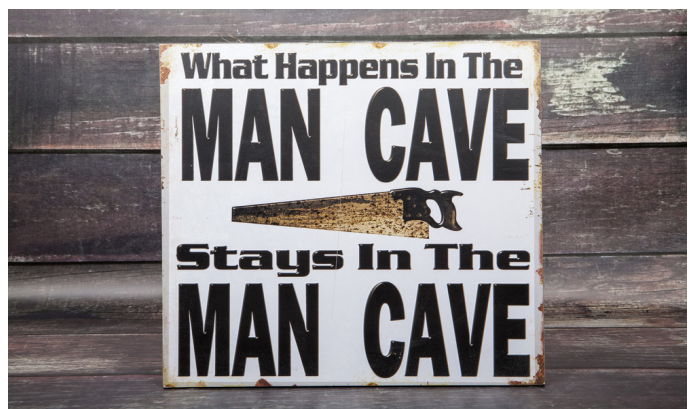
MORE HELP 22



A [10x10 apex workshop shed](#) at **£949.95** is a good space for converting to a man cave



For **£1,299.95** you can have [160 square feet of man cave territory with double door access](#).



Create your own man cave space for hobbies, relaxation or entertaining.

A MAN CAVE IN YOUR SHED



Whatever you use your man cave for, make sure it's damp-free, warm, well-organised and secure.

Having a man cave is the dream of many men. Have you always wanted a space of your own? A man cave where you can indulge your hobbies, kick back and relax with friends, and turn up the bass on your sound system?

If you have space for a shed, or even have an existing shed, you can have it. And what better place than an underused garden shed? With a solid foundation, damp-proofing, heating, power and security, your shed can be turned into a warm, comfortable place for gaming, movies, your own bar or hobby workshop.

More details follow, but here's a summary of our step-by-step guide to converting a new or existing shed into a your own personal man cave.

Whether you're after a dedicated games suite, a bar or just a bolt hole to get away from it all, this guide will help you plan and achieve your dream.



A [10ft x 8ft](#) garden shed for **£679.95** can be roomy if you plan the space well.





Your man cave can be anything you want it to be. Image: www.readersheds.co.uk

1. Start planning your man cave conversion. Make two lists: one detailing what you'll **Use** the shed for, and another detailing what your **Requirements** for those uses are.
2. Plan your man cave's size and layout, according to your requirements list, available space and budget.
3. Thoroughly check your existing shed and chosen site to assess its condition, making any necessary repairs.
4. Make a comprehensive job list. Include the days on which each task will be achieved, and who will be doing each one (e.g. you, your mates, or a professional).
5. Start converting your shed by damp-proofing it.
6. Insulate the structure, then cover the walls with ply, plasterboard or tongue and groove.
7. Install electricity (using mains, solar, or wind power). You'll need a professional for this job.
8. Fit your man cave with your choice of lighting (halogen, LED, fluorescent, lamps, or novelty lights).
9. Install the heating choosing from wood stoves, tube heaters, underfloor, portable radiators, or convection heaters.
10. Connect your man cave to the internet through tethering, WiFi or powerline adapters.
11. Run water to the shed if required, using either new mains pipes or a water butt.
12. Install and properly plumb in the bathroom, if you're having one. A professional plumber should do this work.
13. Ensure your shed and contents are properly secured with proper locks and solid door frames.
14. Move your chosen storage solutions into the shed, along with your man cave gear.
15. Decorate to your own taste.



Even a small garden shed like this [6ft x 4ft apex overlap shed \(£184.95\)](#) can be a useful man cave space.



Planning is the most important stage of your conversion.

1) Uses and Requirements

What kind of man cave do you want? Decide what you want to use it for, and what those uses mean you'll need. Make two lists, one each for:

- **Uses** - what you will do in your shed.
- **Requirements** - what those uses require.

For example, if you plan to Use your man cave as a gaming room, then that will Require that your shed has mains electricity, a reliable internet connection, and room for your gear.

If you want to use it as a gym (Use), you'll need to make sure it has a concrete base, ventilation, and anti-fatigue mats on the floor (Requirements).

Once you've made your list of Uses, keep the following things in mind for your Requirements:

- Furniture, storage, and accessories
- Utilities
- Design
- Base
- Position

- Access
- Ventilation
- Aspect

Some advice on each of these follows.

Furniture, storage, and accessories



There are dozens of uses for a man cave. What will yours be?

Once you've decided what you want to use your man cave for, your requirements list can easily follow. For example, if you want it to be a space to relax in with a few drinks and some friends (Use), then you'll need enough seating and a fridge to keep the beers cold (Requirement). Maybe even a fully-stocked bar area.

If the man cave will be your fortress of solitude, what kind of seating do you want? A recliner, hammock, armchair or sofa?

Rugs, cushions and other soft furnishings will make your man cave a more comfortable place to spend time, as well as helping the space look better.

Planning to screen movies? If you're considering a projector, then you'll need one unobstructed wall in the shed to either project onto or to accommodate a screen. But if you plan on a flat screen TV instead, will you mount it on the wall, or keep it in an entertainment centre?

If you want your man cave to be a place to store a collection of models, trophies or memorabilia (Use), then you'll need a display cabinet, (potentially) a climate-controlled environment (Requirement), and effective security (Requirement).

Dream big at this stage. Write down everything you might want in your ideal man cave. Don't hold back at this point; let your dreams fly! The time for trimming the list down may come later on when you're finalising the layout.

Once you've finished your list of all the furniture, gadgets, and storage required, ask yourself (and write down the answers):

- How (and where) do I want to store everything (e.g. DVDs, game controllers, beer glasses, bottles, books); and
- How do the items on my requirements list interact?

For example, if you want your man cave to be a multi-purpose game and hobby room, then you might need to create separate areas for the entertainment system and workbench. Or, consider furniture that will double up, like a pool table with a cover so you can use it as a desk.

Utilities



Electrical cables need to be buried 50cm deep to conform to building regulations.

Electricity, heating and internet access are likely to be man cave essentials.

You'll need to dig a trench at least 50cm deep to accommodate any electric cables.

Check your requirements list to determine how many power sockets you will need. Account for all heaters and freestanding lamps you might use, as well as your TV, stereo, console and other appliances.

What kind of light will your man cave need? Would you be happy with the light from a few lamps and the odd neon sign? Or do you need overheads for your hobby work?

Do you want the man cave to be self-contained, with its own plumbed-in bathroom?

How significant are your internet needs? Does your TV or gaming console require broadband or will tethering your laptop to your mobile suffice?

See more on these utilities in the Conversion section below.

Design



Your uses and requirements will help to inform the design of your man cave. Take care to choose the right materials.

A wooden shed will allow you to create a man cave to suit your own requirements, including adding doors, windows, and wiring it for heating, electricity and internet. You can also thoroughly insulate and weather-proof it, ensuring your man cave's longevity.

Wooden sheds have different types of exterior, namely overlap or tongue and groove cladding. Although overlap is usually cheaper, tongue and groove is more robust, with better weather-resistant properties. For more detail on different types of wooden sheds, see the main [Waltons](#) range.

While you're looking, consider that an apex shed will give you more height (and more storage potential). A pent shed with a sloping roof is a more suitable choice if the shed will be alongside another building or a fence.

A metal shed is unlikely to be suitable for a man cave because it's prone to condensation, which is likely to damage whatever you store in there. It's also harder to install heating and lighting.

A plastic shed is durable, but is only be appropriate for a man cave if your hobbies will be as lightweight as the shed.

If your hobbies need you to move large materials or pieces of furniture in and out (for example, a pool table or sofa), consider installing [double doors](#). Check you have clear access for large items through your property to the shed.

Base



A concrete base is essential if you're using heavy equipment like a cross trainer or pool table.

The type of base suitable for your shed depends largely on its size, and the weight of the furniture and kit you plan to store in it.

Larger sheds, and sheds with heavy contents (like gym equipment) require a solid, concrete base.

But if your shed is smaller/lighter weight, a paving slab base may suffice. It's cheaper, and easier to install (and later remove, if necessary). But be realistic about the size and weight of your shed; a paving slab base can sink over time, particularly if overloaded.

Position



Make sure you choose the best location for your man cave.

Take a look at your garden - where do you have room? When working this out, add *at least* two more inches to the size of your shed. You will need this space when digging out for the base.

Decide how close do you want it to be to the main house. Although it will be more peaceful if it's further from the main house, this distance may limit your ability to connect to the WiFi. It will also add extra cost and work if you plan to install water and electricity; you need to dig trenches from the main house to the shed to run the pipes and wiring.

When assessing the potential location of your shed, make note of the surrounding area. Are there any young trees nearby that could block the light or access to the man cave in the future?

Ventilation



Include a skylight for more light and ventilation.

If your hobbies require you to work with paints or solvent-based products, you'll need to install a ventilation shaft, or windows that will open.

But for sheds without windows, a ventilation shaft or extractor fan will help air to circulate properly. There is a bonus to having no windows. You'll shield your expensive kit from outside view, helping your man cave to be more secure.

Aspect



Make sure windows are in the right place and position for your man cave

Is natural light an important consideration in your man cave? If you plan on painting miniatures or using your man cave to draw, remember that south-facing windows offer direct sunlight, but indirect light from the north causes fewer shadows, making it easier to see what you're doing.

If light isn't vital for your day-to-day use of the shed (if you plan to be watching tv, rather than sketching, for example), consider south-facing. Natural light can also help heat your man cave on a sunny day. If natural light will prove problematic for gaming or watching movies, think about putting up black-out blinds to prevent glare.

Also, consider the view from your house, as well as from your shed. It's best to make sure that you or your family won't be upset at the sight of your shed!



A huge [160sq ft workshop shed \(£1,299.95\)](#) will easily accommodate most man cave needs.



Plan your layout the old fashioned way, with pencil and paper, or use Internet tools like [Google Drawings](#)

2) Plan Layout and Size

With your Requirements list close at hand, you can now plan the layout of your man cave. Here are three different methods to help you organise how you'll fit your Requirements into your shed:

- **Paper.** Make a scale drawing of your empty shed. Using this old-school method, move around small, cut-out scale versions of your intended furniture, windows and power sockets.
- **Google Drawings.** Google's free software will let you make a scale version of your shed and its potential contents. It's quick and easy to adjust sizes and locations.
- **Room Planning Software.** Experiment with online room planners that let you set room size and position scale furniture and equipment in either 2D or 3D. Try [Floor Planner](#) or [Sketchup](#).

Use these planning tools to experiment with your layout, or moving windows, doors, and even rooms (if you're planning to build a bathroom, for example). You can also test out different sized sheds.

But if your Requirements don't fit inside your shed, scale down the list or plan for a bigger shed.

PLANNING PERMISSION

You may need [planning permission](#) if your new shed is going to be over a certain size. If in any doubt, check with your local Planning Authority.

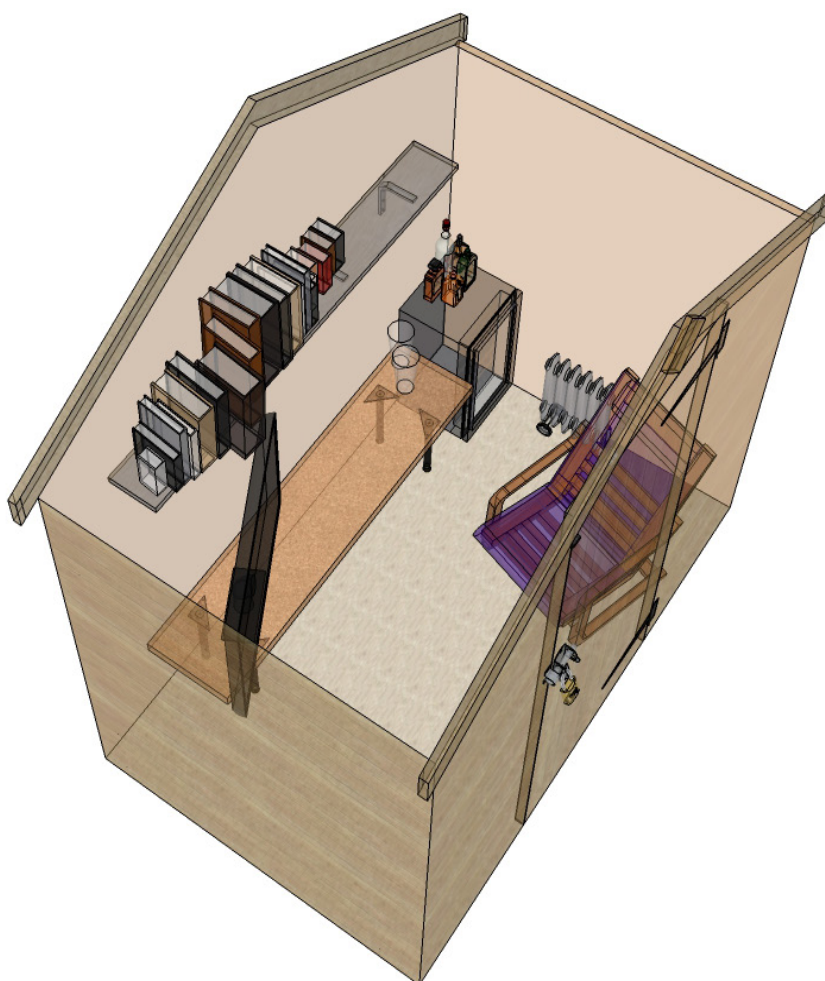
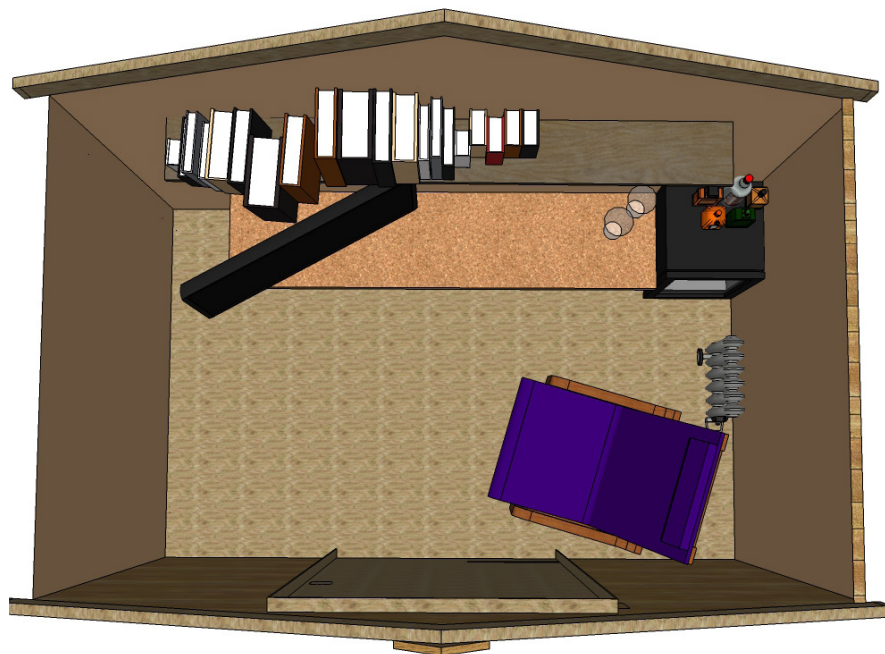
On the next few pages there are three example man cave layouts (made using Sketchup) for these size sheds:

- Small (6ft x 4ft)
- Medium (10ft x10ft)
- Large (16ft x10ft)

1. Small man cave

4ft x 6ft

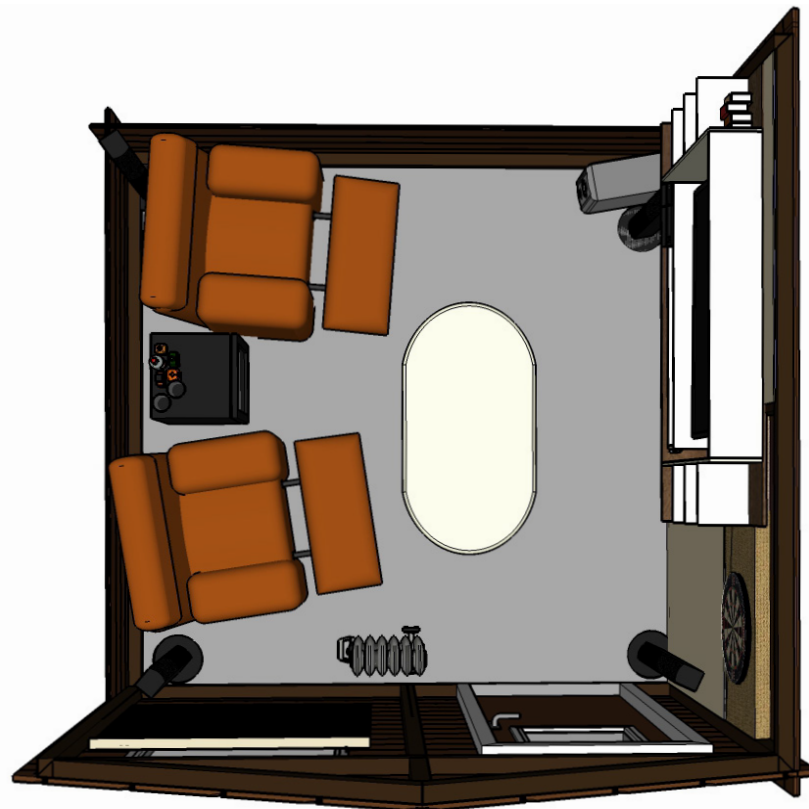
A small 4ft x 6ft shed gives enough space to spend time reading, gaming or watching TV in peace. There's also enough space for a small fridge to keep you refreshed.



2. Medium man cave

10ft x 10ft

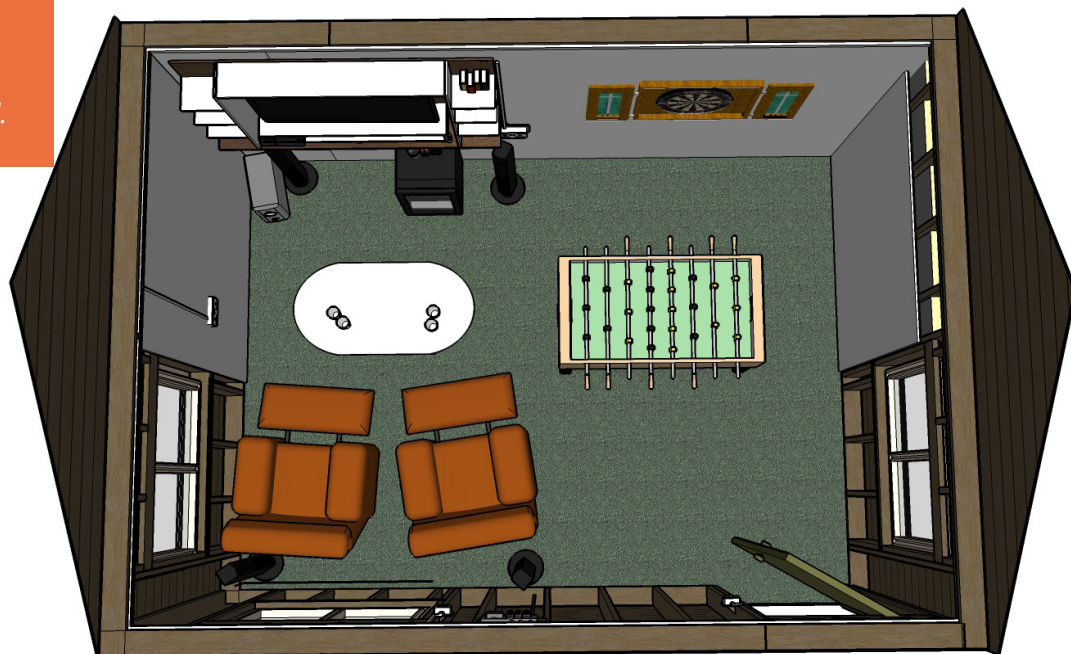
One hundred square feet is easily enough for space and comfort. Entertain a friend, hang out in comfort and store books and music easily.



3. Large man cave

16ft x 10ft

A massive 160 square foot man cave allows you room for gaming with and without computers. Hold a darts or foosball tournament - and make sure the fridge is stocked.



3) Assess the State of Your Shed

Now you know what you want from your man cave, it's time to find out if your existing shed is up to the job.

Empty it out and properly check for subsidence, damage, and leaks. Test the windows and doors. Do they work properly? Are there any tears in the roofing felt? If you're keeping your shed and there are maintenance issues, you need to deal with them before you begin the conversion.

What kind of base does your shed have? Paving slabs or timber may not be strong enough to support the kind of equipment you're hoping to put in your man cave, so you may need to upgrade to a concrete base.

And take a good look at where you plan to put the shed. If you're lucky, your chosen site will be already level (saving you work later on). But if not, you can use bricks and timber to shore up one side and counteract the slope. Or just cut into the slope, building a retaining wall at the back. You may need the services of a builder with this, to make sure your wall's robust, but it can be a DIY job.

4) Make a Job List

Project management tools will help you move forwards with the conversion effectively. If you don't have any experience in this area, use this DIY version:

- Create a spreadsheet, and write down a list of every job that needs doing. This means you'll have at least one job for each of the Requirements on your list.
- Add columns detailing:
 - How long each job might take.
 - Who will do each job. (Will it be you, a contractor, or your mates?)
- Arrange the jobs in the rough order you think they should be done.
- Add and label columns for:
 - Preparation;
 - Day 1, day 2, day 3, etc. (up to 20 days, or as many as you think you need). The day your conversion starts is "Day 1".
- Shade the cell that corresponds to the day you will work on each job.
- If there are jobs that need doing before work starts on the shed, put these in the preparation column. For example: 'Buy new shed'.
- Swap out "day 1" and "day 2" with the actual dates as soon as you know them.

With this job list, you can track the progress of your man cave conversion, as well as making sure professionals and materials are available on the right days.

There's an example spreadsheet planner at <http://bit.ly/waltons-conversion-planner> that you can copy for yourself and use as a template.

	A	B	C	D	E	F	G	H	I	J	K	L
1		Duration	To be done by	Prep y/n	Day 1	Day 2	Day 3	Day 4	Day 5	Day 6	Day 7	Day 8
2	Check existing shed will do the job properly	1hr	self									
3	Check existing shed is in correct position	30 mins	self									
4												
5	IF NOT											
6	Find space for new shed to be installed	30-60 mins	self									
7	Order new shed	30 mins	self									
8												
9	Prepare shed											
10	Make space for the conversion	2 days	self		Clear out and clean shed							
11	Damp proof shed	2 days	self		buy materials: roof felt, wood treatment							
12	Insulate shed	2 days	self		clear surrounding plants, seal any gaps in the construction							
13	Install electricity				buy materials, buy protective clothing							
14	Dig trench for cables	1 day	self/labourer		Book labour service if required							
15	Lay cables	1/2 day	electrician		Book services of electrician to start when you're ready							

Plan each task for your man cave's conversion in a [spreadsheet](#) to keep track of jobs.



Weatherproof your shed by adding a coat of wood preservative.

5) Damp-proofing

Damp leads to mould. These are your shed's enemies. Damp is primarily caused by leaking, poor ventilation and air circulation, and rising damp. Condensation (when the air is cooler than the 'dew point' and moisture forms into water drops) also contributes to damp.

There are some relatively simple methods of damp-proofing your shed. Here are a few to think about:

- Trim or remove any plants or tree branches pressing against your shed. Make sure air can circulate properly around the shed.
- Make sure your roofing felt is in good condition and that your walls have no leaks.
- If you fit a solid concrete base, install a damp-proof membrane.
- Use liquid wool or an expanding, hardening foam filler to close any gaps in the frames of your windows and doors.
- Install permanent and trickle ventilation to ensure air circulates.
- Keep furniture away from outside walls where possible.
- Treat the shed's exterior with a wood preservative.

- Install a vapour barrier (or breathable membrane) to walls when fitting insulation.
- Fit the shed with heating (see below for more details).

Use a [dehumidifier](#) if damp persists.

6) Insulation



There are many types of insulation to choose from. Rockwool or foam insulation boards are effective solutions.

Insulation will help to keep your man cave in top condition, and add a further layer of protection against damp. It can provide some soundproofing as well, which is useful if you're planning to make music with your mates or run a pumping sound system or loud games.

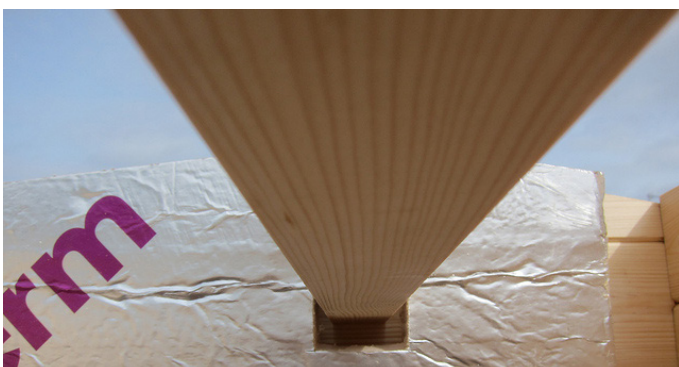
To get the most out of your insulation, install it in the walls, floor, and ceiling before covering it with ply, plasterboard or tongue and groove. Here are some of the best ways to insulate your man cave:

- **Walls.** Think about the following:
 - Foil-coated bubble wrap is cheap and easy to install, but it's best avoided. It's not the most effective insulator, and the foil only reflects well if it's air-facing, which won't be the case. Move on...



Rockwool can be used to insulate your space. Make sure you wear protective gear when using it.

- Glass and mineral wool (AKA fibreglass and rockwool respectively) comes in rolls and can be cut to size. It offers good soundproofing and thermal insulation. When installing, cover your eyes, mouth and nose properly, and wear gloves.



Foam insulation is highly efficient and can be cut to size and shape.

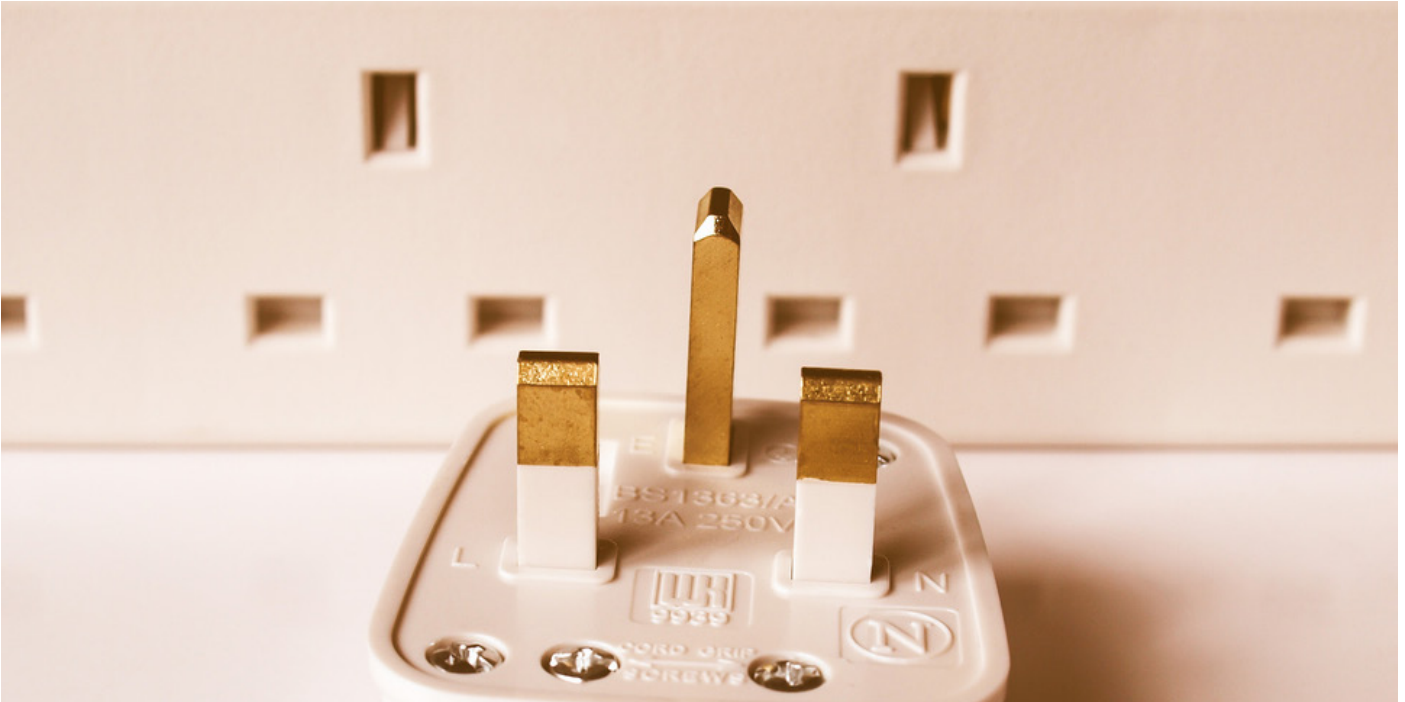
- Foam insulation boards (from brands such as Kingspan and Celotex) are more expensive, but are highly thermally efficient. Each board must be cut to size to allow for sockets and wiring.

- **Floor.** A breathable membrane topped with a rug (or carpet off-cut) makes for a cheap insulating measure. For more substantial protection, use foam insulation boards.
- **Ceiling.** When installing ceiling insulation, be sure to leave a gap between the insulation and the roof; this will help the moisture escape. You have some options here:
 - Sheep's wool and hemp are natural, sustainable insulating materials, which are breathable, which can help prevent damp. They are flexible, so easy to install.
 - You can also use glass and mineral wool, in the same way as in the walls.

When your shed's properly insulated, any heating you install will be much more efficient. It may feel like an irritating expense to insulate at this stage, but you'll save money in the long run when it comes to keeping the damp away and staying warm.



A home gym could be the perfect use for your man cave. Image: [Waltons](#)



Work out exactly how many plug sockets you are going to need for all your equipment.

7) Electricity

You need a registered electrician to sign off on any electrical work you do on the shed for insurance purposes. It's probably best to leave the installation to them as well, even if you're confident of your own abilities.



Always leave electrical work to a registered professional.

To speed up the process, make sure you have the following ready:

- The location of the fuse box;
- Number and location of proposed power sockets, light switches, and (potentially) where you want surround sound installed.

- A list of the gear/utilities you'll be running in the man cave.
- A clear path for the mains cable trench to the shed from your house.

To wire the shed with mains electricity, a trench between the house and the shed will be needed. This trench will need to be at least 50cm deep. Even if you're confident in your own abilities, you should get a qualified and registered electrician to connect your shed to the mains

If your electricity needs are light, you can consider sustainable energy, such as solar or wind instead. For example, if you plan to use the man cave as an old-school library space rather than a high-tech gaming suite.

Renewable energy options are less reliable than access to mains electricity, especially during the winter when light is low. The solution is a storage battery, along with a charge controller, and an inverter (if you need 240v). These take up space, so do factor that into your planning. For more information about going off-grid, see: <http://bit.ly/WALTONSoffgrid>.

8) Lighting

Choosing the right lighting for your man cave is important for both functional and atmospheric purposes. Choose from:

- **Fluorescent overheads.** Useful if you want to spread bright light across your whole shed. Energy efficient, and cheap.
- **Halogen.** Bright, and good for working on detail-oriented hobbies, like clock restoration or model making. They work well in spotlights and track lighting.
- **LED lighting.** Versatile, cheap to run, and essential for a 12V system. Like halogen spots, adjustable LEDs are a good choice if you want to direct bright light to certain parts of the man cave.
- **Lamps.** Cheap, easy to install and move around, lamps can also be a stylish choice. But they take up floor and table space, and might not be bright enough.
- **Novelty lights.** Themed shades, which use normal light bulbs (like hanging pool table lights, or a card-table shade to drop over a poker table) are decorative and functional. Neon lights and signs also provide a good level of coloured light. Upcycled beer can track lighting can also be a fun addition.

9) Heating



A wood burner is an attractive and efficient source of heat. Make sure that it's installed properly by an experienced professional.

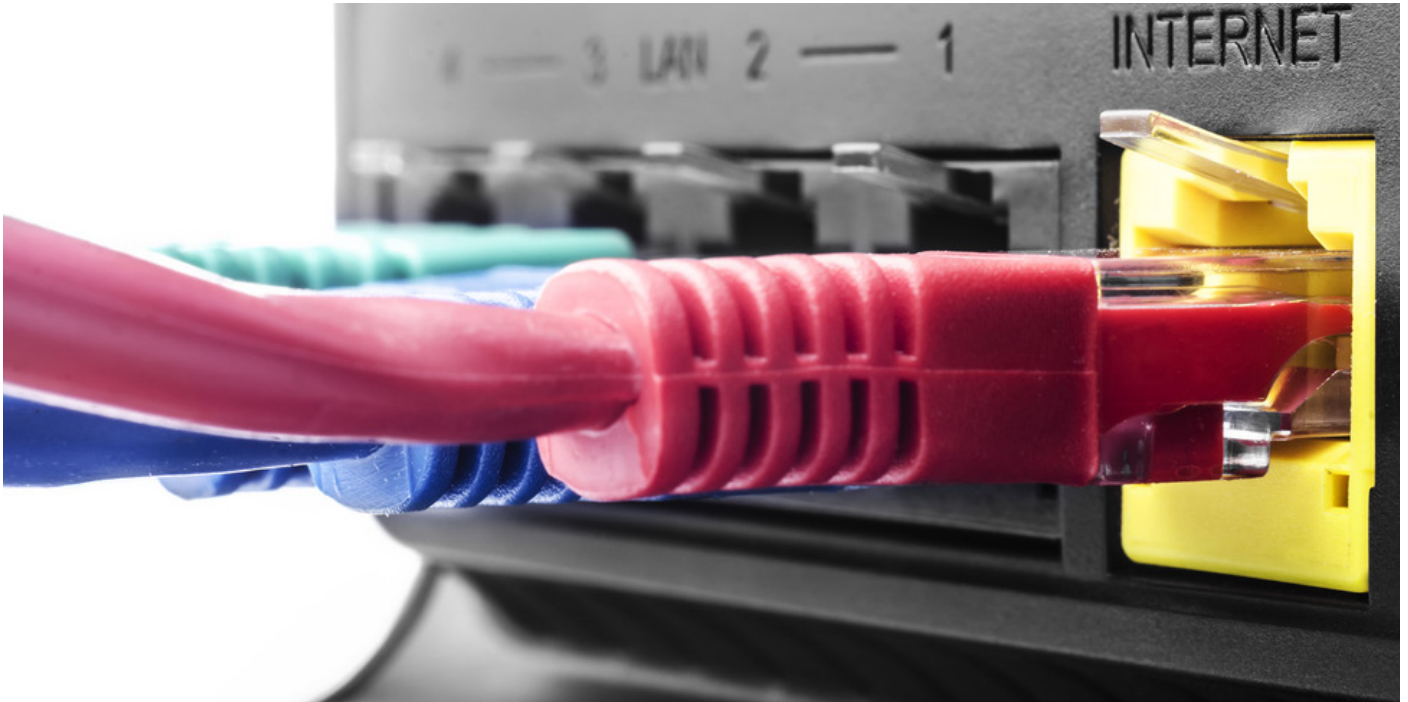
Installing effective heating makes sure that your man cave is a comfortable place to spend time all year round. It also protects your gaming gear, furnishings and other items from getting damaged by damp.

If the shed has been insulated properly, it shouldn't be too expensive to keep the shed's temperature above the dew point (the point at which moisture condenses on cool surfaces).

Heating your man cave can be easy and economical. Either use portable heaters, or install permanent heating.

There's a multitude of solutions for keeping your man cave warm. Here are some heating options to consider:

- **Wood stove:** Old school and atmospheric. It will need to be installed by a qualified professional (including the addition of flue and vent) and needs thorough fire-proofing, which can make costs high. The result? A reliable, carbon-neutral source of heat.
- **Tube heater.** Plugged in a wall socket, these thin, tube-like heaters take up little space. Safe, and cheap to run.
- **Underfloor heating.** Also expensive to install (and maintenance issues may require the floor to be pulled up). But spreads an even temperature across the shed and often requires less energy than standalone heaters.
- **Electric heater or portable radiator.** These are safe and offer a decent blast of heat, but they're not efficient. Damp could be a risk because the heat may not reach all areas of the shed.
- **Wall-Mounted Electric radiator.** Safe, convenient and cheap to run, but take up precious wall space.
- **Electric convection heater.** Can be either freestanding or wall-mounted. Cost-effective to install and maintain. Like any plug-in heater, you can control with a thermostat and timer.
- **Halogen heater.** Efficient and cheap to run, a halogen heater will work anywhere there's an electrical supply.
- **Portable gas and paraffin heaters** give out a lot of heat, but should be avoided. They make the windows and walls stream with condensation.



There are a number of ways to connect your man cave to the internet.

10) Internet

As long as you have mains electricity connected, there are several ways to connect to the internet in your man cave:

- **Home WiFi.** But the further you are from the house, the weaker the signal will become.
- **A WiFi Extender** will boost an existing WiFi signal up to 30 metres.
- **Tether** your laptop to your mobile phone and use its signal and data. This can work out to be an expensive way to connect, depending on your mobile data plan.
- **Powerline Adapter** to create a secondary network, built on your home's existing broadband connection. It needs your mains electricity to extend to your shed. An adapter plugged into a socket in your shed will be the source of your new WiFi signal.

11) Water



*Do you need running water in your man cave?
If not, consider a water butt to collect rainwater.*

You can supply your shed with water in one of two straightforward ways:

- **The mains** and new water pipes.
- **A water butt** and guttering.

To install mains water, you'll need to dig a trench to the shed to lay the new pipes. This must be separate to the electrical cable trench. The waste water pipe can run in the same trench as the water pipes.

Water pipes should be laid below the frost line, at least 75cm deep. Where they surface, they need to be properly insulated from cold.

Consult with a plumber for any work involving the water pipes, especially if you are considering installing a bathroom to make your man cave more self-contained. This will increase your costs, however, as you will need to run mains water and power to the bathroom, as well as allowing for the disposal of waste water.

The further you are from the main house, the more expensive it may be to install a toilet in the shed. If this is the case, consider an eco toilet. Also known as "dry" or "composting" toilets, these new models look the same as their conventional counterparts, but use either a filtering or incineration system, depending on the model.

If you need non-drinking water, but don't want the cost of plumbing, simple guttering and a water butt is a good option. It's easy to install; many water butts come with gutters in kit form.

12) Security



Your man cave may be home to expensive equipment. Make sure you're secure.

If you use your shed to house expensive equipment, make sure you have effective security.

- **Windows.** Laminated glass windows won't smash if someone hits them with a heavy object, like a hammer.

- **Alarm.** Wire your man cave into your home burglar alarm.
- **Motion-sensitive security lights.** Bright exterior lights can put off would-be thieves.
- **Curtains and blinds.** Will help avoid opportunistic break-ins by shielding your valuables from view
- **Locks and reinforced door.** Rim locks are more secure than a pad bolt or hasp. Beware: lots of visible locks can signal the presence of valuables.
- **Hinges.** Use coach bolts with rounded heads - anything less, and thieves can simply unscrew your window or door hinges.
- **Garden.** Make the garden difficult to get into. This discourages most opportunist thieves.
- **Storage.** Put valuables into hidden secure boxes; lock larger items to the floor where possible.
- **Door.** A standard shed door won't deter a burglar. Fit a more secure framed door with a mortice or Yale lock. Reinforce the door with sheet metal, especially behind the lock.

Finally, make sure you have your shed contents [insured](#).

13) Storage



Keep CDs and DVDs in purpose built shelving.

Smart storage will minimise the size of shed you need, and give you more space to use.

Build shelving into every surface to store books and equipment can maximise your storage space

Here are some other storage ideas to consider:

- **Shelves** on walls and in corners. Useful for bar or reading areas.
- **Overhead** storage racks.
- **Wall-mounted pegboards.** Can hold shelves, gaming controllers, remotes.
- **Pegboard slides.** Slide out vertically from under your or table.
- **Freestanding, large lockable cupboard.** Keeps expensive gear out of sight and is a catch-all storage space.
- **Wall-mounted cupboards** leave space underneath, e.g. for a radiator.
- **Customise a cupboard** by adding shelves across its sides for extra space, or attach hooks.
- **Clear, stackable plastic storage boxes.** Cheap and flexible, they keep everything dry while also allowing you to see what's in each box.
- **Hooks** for hanging wires/game controllers. These can be on walls or even ceilings.
- **Furniture that doubles up** - like bar stools or benches with storage space under the cushions.
- **DVD/CD/game disc curtain.** Discs in clear plastic wallets can be hung from the ceiling for both decoration and storage. Can also act as room divider.
- **Hanging door organiser** for smaller objects, such as remotes, tools, or headphones.
- **Wooden wine crates** hung on the wall, or stacked, to shelve books or bottles for a bar.
- **Attach gadgets** (such as the remote or game controllers) to the wall nearest your seating with velcro for easy access.
- **A rolling trolley** can store barware or paintbrushes on top, with either drawers or a cupboard in the main body beneath.

14) Decoration



Painting with light colours will give your man cave a more spacious feel.

A coat of a light-coloured paint inside is a good place to start, as this makes the space brighter, and will make sure you get the most of your lighting.

Blues, greys and creams are good colours to use. Want to create a bit more atmosphere? Use darker colours on one or more walls to create a warmer feel in your man cave.

Be sure to protect the outside with wood treatment or paint.

On the walls, use textured or theme wallpaper to match the concept of your man cave. Hang posters, vintage maps and curios that will suit your taste. A dartboard is a good addition for a man cave bar or games room wall. For a library room space, consider walls filled with books.



Setting up a man cave bar? Use your travels for inspiration! Image: readersheds.co.uk

15) Entertainment

Once your man cave is decorated to your taste, it's time to kit it out with everything you want in there. Here are just a few suggestions to get you started:



Dartboards take up very little space, and can provide hours of entertainment.

• Bar:

- Converted wine barrels or beer kegs can make good seating.
- Neon or vintage signs, glass racks, and drinks fridge add to a bar atmosphere.
- The bar itself could either be a movable trolley, or a permanent fixture.
- Optics for dispensing drinks can be mounted on the wall to save shelf space.
- Darts and board games are handy for entertainment when friends visit.
- Remember, you can't sell alcohol without a license, but if you're entertaining in your man cave bar, it's just the same as giving friends a drink at home.



No space for a full bar in your shed? Try a portable bar like this one. Image: [steampunkfamily.com/ Flickr](http://steampunkfamily.com/)

• TV/computer games:

- **TV.** Your TV can be either wall-mounted or standing on a table/entertainment centre. Consider using an overhead projector rather than a TV unit.
- **Games console.** You've probably got your favourite console already. Does it need an internet connection to play your chosen games?
- **Vintage arcade games.** If you have space, but your budget won't stretch to your favourite 80s arcade game, the cabinets are readily available online. Decorate it and use it as a storage unit.

• Non-computer games:

- **Table games.** Run foosball, table tennis, air hockey or pool tournaments from your man cave.
- **Card table.** Poker nights with the boys? Or a few gentle games of crib with a friend?
- **Board games.** Strategy games like Risk, or something lighter such as Cards Against Humanity can keep your man cave visitors entertained for hours.

• Music system:



Turn your man cave into the ultimate listening space or even studio. Image: www.readersheds.co.uk

You can make your man cave the ideal space to listen to music, whether you're relaxing to classical music, or pumping out heavy rock while you party.

A simple, integrated music system is an easy solution, but once you have your record deck and CD player installed, consider wall-mounting your speakers in the best place for stereo listening. This is often the opposite wall to where you'll be sitting.



Make sure you have everything you need to complete your conversion before you start.

You should now be ready to tackle the conversion of a new or existing shed into a man cave.

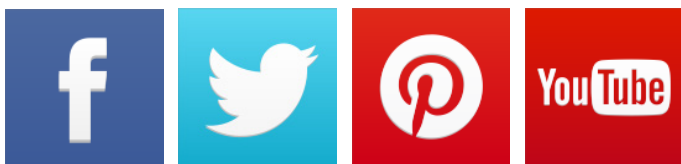
Planning is the most important stage. Use professionals for utilities to ensure your project is safe and conforms to building regulations.

Resources

Find more help with your conversion here:

[Waltons help pages](#)
[Waltons blog](#)

And join us on social media:



For new sheds

Visit waltons.co.uk if your existing shed isn't up to your conversion or you want a new shed.

Prices shown are correct at time of publication. For latest prices visit waltons.co.uk.

Any modification to a new Waltons shed can void your warranty.



A [14x8 ft pressure-treated pent shed \(£699.95\)](#) is ideal for a man cave on a medium budget.



An [8x6 ft windowless shed](#) will keep valuables hidden from sight at just **£229.95**.